



TEWATT DIESEL
AIR COMPRESSOR
SERIES

ESSENTIAL
POWER ENTIRE
SAFEGUARD



EU Stage V/Tier 4 Final Series



TECHNICAL PARAMETER

Series	TWT1200D-35T Series	TWT1250D-25T Series		TWT605D-17T Series		TWT493D-14T Series			TWT185D-7T Series	
Model	TWT1200D-35T/1364D-25T	TWT1250D-25T	TWT1150D-25T	TWT750D-13T	TWT750D-21T	TWT500D-16T	TWT406D-7T	TWT375D-12T	TWT185D-7T	
Air-end	TEWATT									
Air-end Model	TWT3000-SP20	TWT0835V		TWT0270A	TWT0825-A	TWT0258MA	TWT0248T		TWT0143RB-C	
Stage	TWO	TWO	TWO	Single	TWO	Single	Single		Single	
Free Air Delivery	CFM	1200/1364	1250	1150	750	750	500	406	375	185
	m ³ /min	34/39	35.4	33	21	21	14.2	11.5	10.5	5.2
Working Pressure	psig	507.5/362.5	362.5	362.5	188.5	304.5	232	100	175	100
	bar	35/25	25	25	13	21	16	7	12	7
Screw oil	l	160	110		80	100	50	50		20
	gal	35.2	24.2		17.6	22	11	11		4.4
Engine										
Brand	SCANIA	SCANIA	CUMMINS	VOLVO		DEUTZ	CUMMINS		YANMAR	
Model	DC16-314A	DC13-313A	QSG12-C500	TAD841VE	TAD883VE	TCD6.1 L6	F3.8		4NV86CT-PSY	
Power (HP/KW)	650/478	550/405	500/373	260/185	320/235	215/160	121/90	148/110	48/35.5	
Rated/Idle Speed (rpm)	1800 (2050) /1350	1800/1350	1800/1350	1950/1350	1900/1350	2200/1350	2200/1350	2000/1350	2200/1600	
Cylinders	V8	6	6	6	6	6	4		4	
Bore (mm)	130	130	134	110	110	101	102		88	
Stroke (mm)	154	160	144	135	135	126	115		90	
Displacement (L)	16.4	12.7	11.8	7.7		6.1	3.8		2.189	
Emission	EU Satge V									
Battery Voltage(V)	24	24		24		24	24		12	
Fuel Tank	l	900	750		600		180	180		75
	gal	198	165		132		39.6	39.6		16.5
AdBlue Tank	l	70	70	50	50		20	20		/
	gal	15.4	15.4	11	11		4.4	4.4		/
Connector×Qty	3/4"×1, 2"×1	3/4"×1, 2"×1		3/4"×1, 2"×1		3/4"×1, 2"×1		3/4"×2		
Wheel×Qty	20×12-16×4	20×18-16×4		215/75R16×4		7.00-16×2				
Weight	kg	8000	6500		4500		2500	2450		1200
	lb	17637	14330		9921		5512	5401		2646
Dimension (L×W×H)	mm	5350×2200×2630	4250×2100×2650		4100×1850×2450		4230×2100×2250		3400×1650×1500	
	inch	218 "×87" ×104 "	167" ×83 "×104"		161 "×73" ×96 "		167" ×83 "×89"		134" ×65 "×59"	
Noise (dB(A))	80±5		80±5		75±5		72±5		68±5	
Working Temp. (°C)	-10°C ~ +50°C (Special Working Conditions Can be Customized)									

OPTIONAL PARTS:

- 1, Built-in rear cooler and air-water separator to meet the special requirements for discharge temperature and quality.
- 2, Suction fan, to ensure that the
- 4, Ultra-low temperature auxiliary start amplifier
- 5, Engine cooling water heating system
- 6, High and low double pressure switching mode

EU Stage III/Tier 3 Series



TECHNICAL PARAMETER

Series	VOVLO Series		Cummins Series				YUCHAI Series		YANMAR Series	
Model	TWT1364D-35F/ TWT1500D-24F	TWT700D-22T	TWT1200D-30T	TWT1250D-25T	TWT900D-21T	TWT605D-17T	TWT550D-16T	TWT1100D-25T	TWT493D-14T	TWT185D(III)-7T
Air-end	TEWATT									
Air-end Model	TWT0840	TWT0825	TWT0835VII		TWT0825IIA	TWT0270A	TWT0258MA	TWT0835	TWT0258MA	TWT0143RA
Stage	TWO		TWO		Single		TWO	Single	Single	
Free Air Delivery (CFM/m ³ /min)	1364(38.5)/ 1500(42.5)	700/20	1200/34	1250/35.4	900/25.5	605/17	15.5/16	1100/31	493/14	185/5.2
Working Pressure (psig/bar)	507.5(35)/ 348(24)	319/22	435(30)	362.5(25)	304.5/21	246.5/17	232/16	362.5 (25)	203/14	100/7
Screw Oil (L)	185	90	100	100	90	70	50	100	50	20
Engine										
Brand	VOLVO		CUMMINS				YUCHAI		YANMAR	
Model	TAD1643VE-B	TAD852VE	QSZ13-C550-30	QSZ13-C550-30	QSL8.9-C360-30	QSC8.3-C260-30	QS85.9-C210-30	YC6MK400-H300	YC4A175-T300	4TNV88
Power (HP/KW)	768/565	285/210	550/410	550/410	360/264	260/194	210/154	400/295	175/129	48/35
Rated/Idle Speed (rpm)	1800,1900/1350	1850/1350	1800/1350	1850/1350	1900/1350	1800/1350	2200/1350	1900/1300	2050/1350	2200/1600
Cylinders	6	6	6				6	4	4	
Bore (mm)	144	110	130	130	114	114	102	129	108	88
Stroke (mm)	165	135	163	163	144.5	135	120	155	132	90
Displacement (L)	16.1	7.7	13	13	8.9	8.3	5.9	12	4.8	2.189
Emission	EU Stage III/Tier 3									
Battery Voltage(V)	24		24				24		12	
Fuel Tank (L)	1060	600	700	800	600		180	800	180	75
Connector×Qty	3/4"×1, 2"×1		3/4"×1, 2"×1				3/4"×1, 2"×1		3/4"×2	
Wheel×Qty	20x12-16	215/75R16×4	215/75R 17.5×4	ST235/80R 16×4	215/75R16×4	215/75R16×4	7.00-16×2	ST235/80R 16×4	7.00-16×2	165/R13×4
Weight (kg)	7000/7500	4500	5500(6000)/ 6500(7000)	5500(6000)/ 6500(7000)	4500	4000	2300/2500	5500/6000	2300/2500	1200
Dimension (mm) Skid-mounted	4800×2200×2510	/	3900×2100×2300/ 4200×2100×2300	3900×2100×2300/ 4200×2100×2300	/	/	3000×1500×1600	3900×2100×2300	3000×1500×1600	/
Dimension (mm) Tow	5350×2200×2610	4370×1860×2450	4250×2100×2650/ 4550×2100×2650	4250×2100×2650/ 4550×2100×2650	4370×1860×2450		4230×2100×2000	4250×2100×2650	4230×2100×2100	3400×1650×1500
Noise (dB(A))	85±5	80±5	72±5	85±5	75±5		72±5	85±5	72±5	68±5
Working Temp. (°C)	-10°C ~ +50°C (Special Working can be Customized)									

air flow to normal operation below -15 °C. 3, Free choice of mobile wheels and skid-mounted

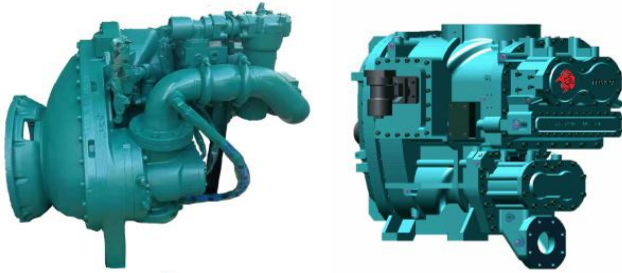
EU Stage II/Tier 2 Series



TECHNICAL PARAMETER						
Model	TWT1100D-35T/ TWT1250D-25T	TWT750D-13T	TWT900D-21T	TWT375D-10T	TWT493D-14T	TWT550D-16T
Air-end	TEWATT					
Air-end Model	TWT0835VII	TWT0270A	TWT0825IIA	TWT0248T	TWT0258MA	
Stage	TWO	Single	TWO	Single		
Free Air Delivery (CFM/m ³ /min)	1100(31)/1250(35.4)	750/21	900/25.5	375/10.6	493/14	15.5/16
Working Pressure (psig/bar)	507.5(35)/362.5(25)	188.5/13	304/21	145/10	203/14	232/16
Screw Oil (L)	100	70	90	50		
Engine	CUMMINS					
Brand	CUMMINS					
Model	QSZ13-C550-II	6CAT8.3-C260II	6LTAA8.9-C360	6BTA5.9-C150-30	6BTA5.9-C180-33	6BTA5.9-C210-30
Power (HP/KW)	550/410	260/194	360/264	150/113	180/133	210/154
Rated/Idle Speed (rpm)	(1700/1350)/(1850/1350)	1900/1350	1900/1350	2000/1350	2050/1300	2200/1350
Cylinders	6	6		6	6	6
Bore (mm)	130	114	114	102	102	102
Stroke (mm)	163	135	144.5	120	120	120
Displacement (L)	13	8.3	8.9	5.9	5.9	5.9
Emission	EU Stage II/Tier 2					
Battery Voltage(V)	24					
Fuel Tank (L)	800	600	600	120	120	120
Connector×Qty	3/4"×1, 2"×1					
Wheel×Qty	ST235/80R 16×4	215/75R16×4		7.00-16×2		
Weight (kg)	6000/5500	4000	4500	2300/2500		
Dimension (mm) Skid-mounted	3900×2100×2300/ 3600×2100×2300	/		3000×1500×1900		
Dimension (mm) Tow	4250×2100×2650/ 3950×2100×2650	4370×1860×2450		4230×2100×2040		
Noise (dB(A))	80±5	75±5		72±5		
Working Temp. (°C)	-10°C ~ +50°C (Special Working Conditions Can be Customized)					

Remark:

1. Above models is the some of TEWATT,if need other models,please contact with salesman.
2. Above parameters for reference,if change will inform.
3. Machine used in Harsh environment also can be produced.



01 | TEWATT SCREW AIR-END

- Big rotor, low speed
- Efficient Specific power
- 5 years/10000 hours warranty



02 | SWEDEN SCANIA ENGINE

- Super lower fuel consumption
- Excellent Power to Weight Ratio
- Extremely long lifetime and low Maintenance cost
- Tier 4 emission standard



03 | SWEDEN VOLVO HEAVY DUTY INDUSTRIAL ENGINE

- Low fuel consumption, energy conservation, environmental protection
- Large power surplus, more stable
- 3000 hours/2 years long warranty
- Tier2/Tier3/Tier4 emission standard



04 | CUMMINS ENGINE

- Low Buy and Maintenance cost
- Stable and durable performance
- Strong power, fuel saved
- Tier2/Tier3 emission standard



05 | INTELLIGENT CONTROLLER

- Multi-language display
- Global Smart cloud management system
- GPS/GPRS control
- Full running CVT (continuously variable Transmission) system
- Full running Alarm shutdown protection system



06 | AIR FILTER SYSTEM

- Heavy load air filter system
- Large filtration area, small resistance
- Large dust capacity, long replacement cycle



07 | INTAKE SYSTEM

- Flexible CV Loading/Unloading function
- Anti-vomiting oil one-way function
- Normal closed low load auxiliary start-up function
- Automatic pressure balance system
- Machine life tested More than 1 million time





Mine Blasting



Water well/Geothermal



Foundation construction



Offshore application



Foundation construction

Brochure doesn't include warranties that are explicit or implied for the products described. Any guarantees or other sales condition would follow Hubei Teweite Power Technology Co.,LTD. Product improvement is our persistent pursuit, TEWATT reserves the modified rights about the design and technical specifications.
Print Version:202004



CHINESE FACTORY
HUBEI TEWEITE POWER TECHNOLOGY CO.,LTD.
 No.20 Fuguang Rd.,XiaoNan Economic Development
 Zone,Xiaogan-432100,Hubei,China
 TEL:+86-712-2517118
 FAX:+86-712-2595359
 Web:www.tewatt.com
 Web:www.compressor-tech.com
 Email:003@tewatt.com.cn